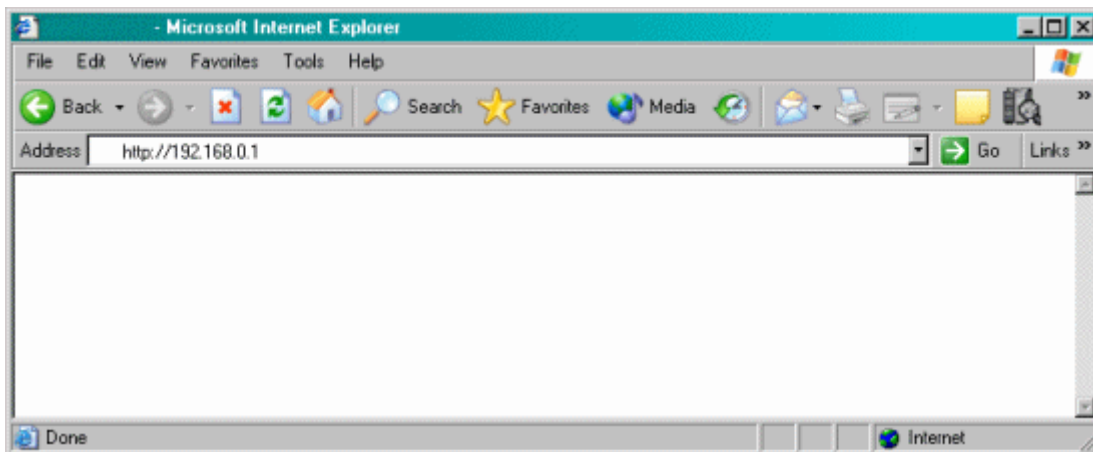


Actiontec® 1520 and 1524

How to Set Up Remote Access

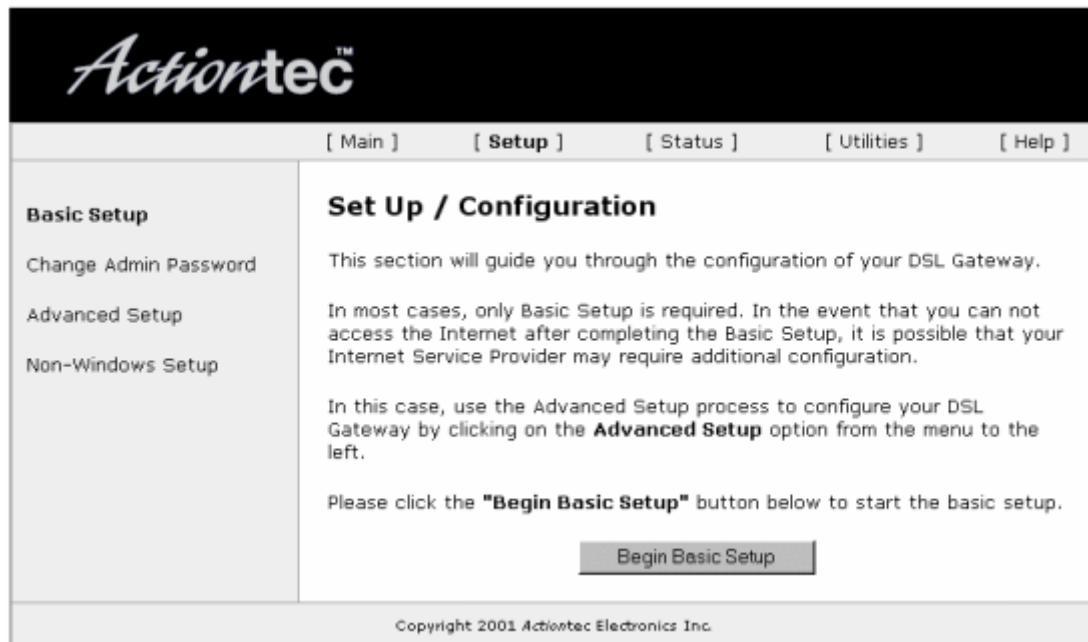
1. Open your Web browser (Microsoft® Internet Explorer or Netscape®). In the location or address bar, type **192.168.0.1**. Select **Enter**.



2. Select **Setup / Configuration**.



3. Select **Advanced Setup** from the options on the left.



Actiontec™

[Main] [**Setup**] [Status] [Utilities] [Help]

Basic Setup

- Change Admin Password
- Advanced Setup**
- Non-Windows Setup

Set Up / Configuration

This section will guide you through the configuration of your DSL Gateway.

In most cases, only Basic Setup is required. In the event that you can not access the Internet after completing the Basic Setup, it is possible that your Internet Service Provider may require additional configuration.

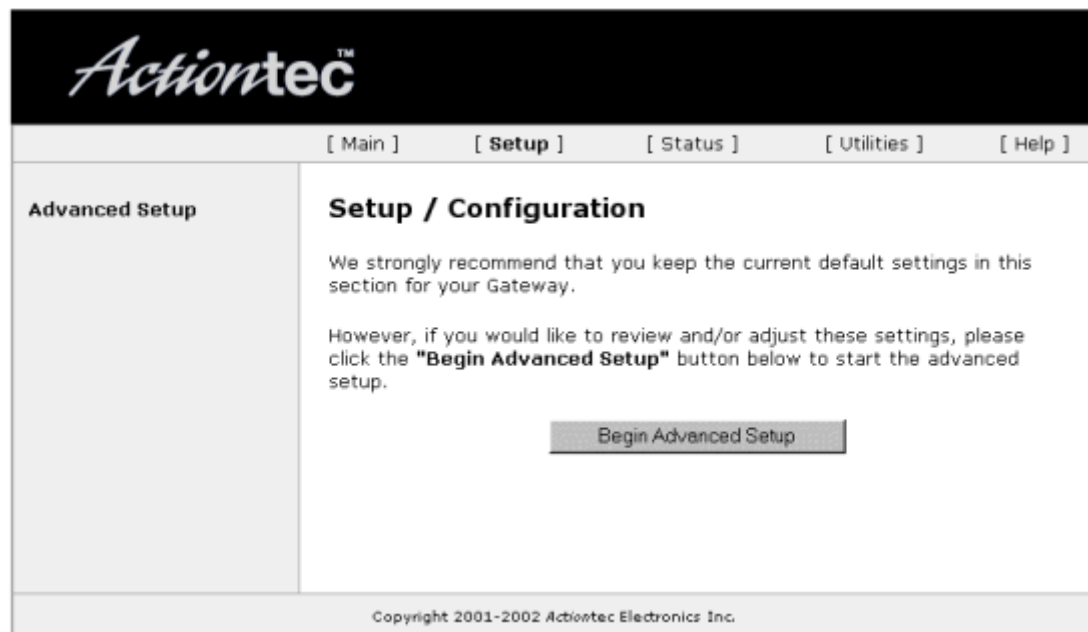
In this case, use the Advanced Setup process to configure your DSL Gateway by clicking on the **Advanced Setup** option from the menu to the left.

Please click the **"Begin Basic Setup"** button below to start the basic setup.

[Begin Basic Setup](#)

Copyright 2001 Actiontec Electronics Inc.

4. Select **Begin Advanced Setup**.



Actiontec™

[Main] [**Setup**] [Status] [Utilities] [Help]

Advanced Setup

Setup / Configuration

We strongly recommend that you keep the current default settings in this section for your Gateway.

However, if you would like to review and/or adjust these settings, please click the **"Begin Advanced Setup"** button below to start the advanced setup.

[Begin Advanced Setup](#)

Copyright 2001-2002 Actiontec Electronics Inc.

5. Select **Remote Management** from the options on the left.

- Select **On**, then select **Next**.
- Now select **Next** again.
- Select **Save and Restart** in the bottom left of the screen.

The screenshot displays the Actiontec web interface. At the top left is the Actiontec logo. A navigation bar contains links for [Main], [Setup], [Status], [Utilities], and [Help]. On the left side, there is a vertical menu under the heading "Advanced Setup" with the following items: WAN IP Address, Wireless Settings, LAN IP Address, DHCP Server, Services Blocking, Website Blocking, VPN Pass Through, Remote Management, Port Forwarding, DMZ Hosting, Firewall, Dynamic Routing, NAT, Static Routing, and MAC Address Cloning. Below this menu is a "Save and Restart" button. The main content area is titled "Remote Management" and contains the text: "The default Remote Management setting is **Off** for security reasons. If you want to access your Gateway remotely, please select **On**." Below this text, the "Remote Management:" label is followed by a radio button selected for "On" and an unselected radio button for "Off". At the bottom of the main content area are two buttons: "Back" and "Next". The footer of the page reads "Copyright 2001-2002 Actiontec Electronics Inc."

6. Select **Save and Restart**.



7. When the Power LED stops flashing, the configuration is complete.

