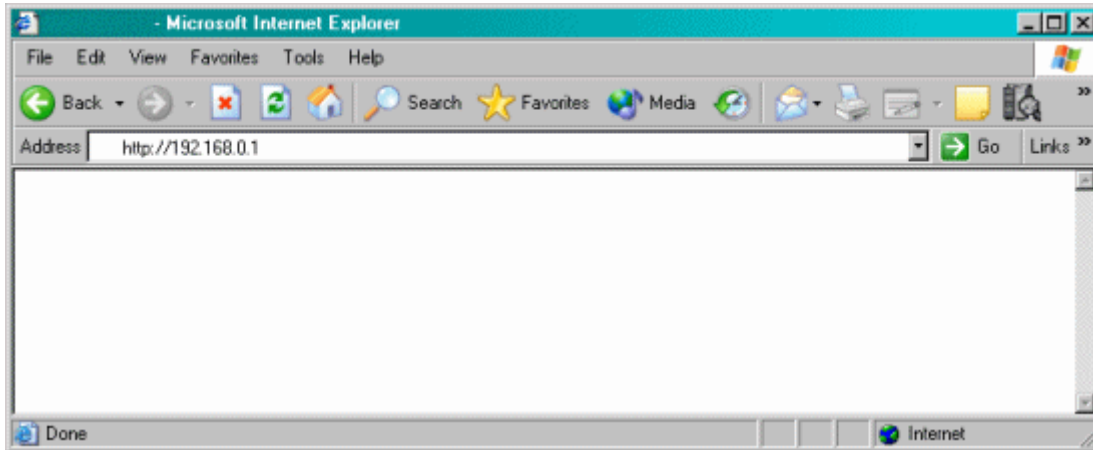


Actiontec® 1520 and 1524

How to Check Your Firmware Version

1. Open your Web browser (Microsoft® Internet Explorer or Netscape®). In the location or address bar, type **192.168.0.1**. Select **Enter**.



2. Select **Status**.



- Now you can see the firmware version running on your DSL modem. The version is defined by the last two numbers before the dash (-). This example shows Version .69.

NOTE: Check the Firmware Update and Recovery section to install the most recent version of firmware.

The screenshot shows the Actiontec modem's web interface. At the top, the Actiontec logo is displayed. Below it is a navigation bar with links for [Main], [Setup], [Status], [Utilities], and [Help]. The main content area is titled "Current Status" and is divided into two sections: WAN and LAN. The WAN section shows the modem is connected via PPPoA with an IP address of 63.230.63.230. The LAN section shows an IP address of 192.168.0.1 and DHCP server status as "on". A "Main" button is located at the bottom right of the status area. A copyright notice for Actiontec Electronics Inc. is at the very bottom.

Section	Parameter	Value
Firmware	Version:	1.60.10.0.69-R1524SU
	MAC Address:	00:20:E0:0E:31:39
	WAN	
WAN	Connection:	Connected
	Mode:	PPPoA
	IP Address:	63.230.63.230
	Subnet Mask:	255.0.0.0
	Gateway:	67.41.63.230
	DNS #1:	207.108.224.1
	DNS #2:	204.147.80.5
	LAN	
LAN	IP Address:	192.168.0.1
	Net Mask:	255.255.255.0
	DHCP Server:	on